

Glensalloch Wind Farm proposal unveiled

Existing view from Crawick Multiverse Park



BayWa r.e. is pleased to introduce our initial plans for Glensalloch Wind Farm, a proposed renewable energy project in Dumfries and Galloway.

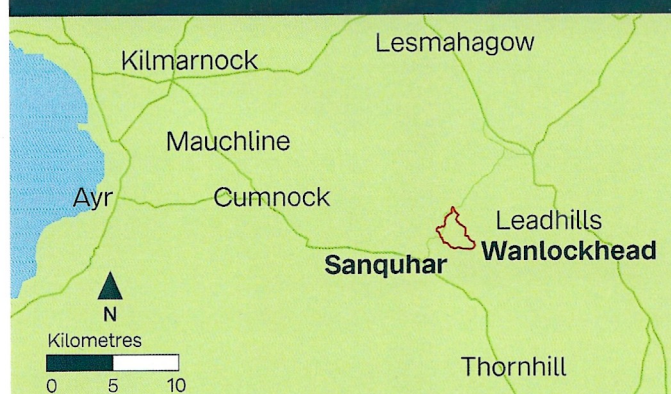


We are committed to delivering a wind farm that is not only environmentally responsible but also shaped through meaningful community engagement. This is the beginning of a consultation process where local voices will help shape how the project progresses.

As part of our pre-application consultation, we are inviting residents and local stakeholders to attend one of our upcoming events.



Site location



The proposed site is located approximately 5 km northeast of Sanquhar and around 3 km west of Wanlockhead.

You have the opportunity to:

- View our early plans for Glensalloch Wind Farm
- Meet the BayWa r.e. team
- Ask questions and share your views
- Learn about the project timeline and next steps.



Everyone is welcome



Public exhibitions to be held on:

Monday, 1 September 3pm – 7pm
A' The Airts, 8 – 12 High Street, Sanquhar DG4 6BL

Tuesday, 2 September 3pm – 7pm
Wanlockhead Community Centre, Wanlockhead ML12 6UT

Wednesday, 3 September 3pm – 7pm
Miners Memorial Hall, Needle Street, Kirkconnel DG4 6PH

More about the **proposal**

The Glensalloch Wind Farm site includes a mix of agricultural land and small pockets of conifer plantation.



It was chosen after careful consideration of several key factors:

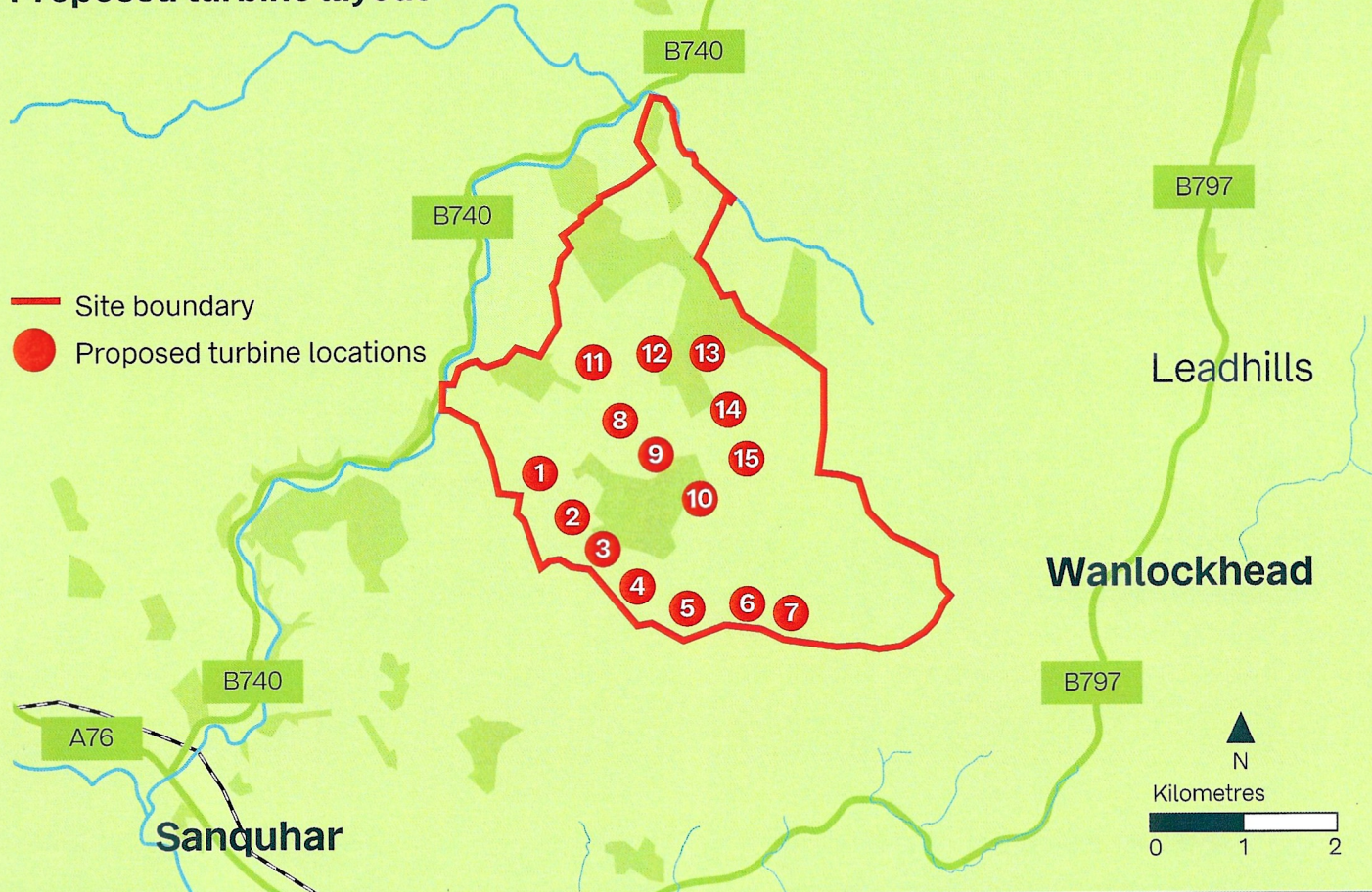
- Strong **wind resource**
- **Grid offer obtained**
- The site has no international or national protections for its landscape or wildlife.

To date our team has focused on a combination of desk-based assessments, site surveys, and technical studies to better understand the local area.

This early work has informed the first draft layout of the wind farm, shown below.

The area was previously considered for wind energy as part of a different project several years ago. However, this is a new proposal – with a new team, a smaller layout, and a much stronger focus on sensitive design and community collaboration.

Proposed turbine layout



The project is currently anticipated to include:

- Up to 15 wind turbines, each up to 220m to tip



- Turbine foundations and hardstanding areas
- An onsite substation

- Access from the B740, subject to final access review
- Onsite access tracks
- Temporary storage and construction compounds

- Underground cabling to connect turbines to the substation – Grid connection will be a separate planning application

- Construction compound, laydown areas, and borrow pits

- Biodiversity enhancement areas



Powering opportunities locally

Opportunities for communities

We believe renewable energy projects should provide long-term value to the communities that host them.

For every megawatt (MW) of installed capacity at Glensalloch Wind Farm, we will contribute **£5,000 annually to a dedicated community benefit fund.**

This flexible fund can support:

- **Community-led projects**
- **Local services and facilities**
- **Education, training, and job opportunities**
- **Climate action and sustainability initiatives.**

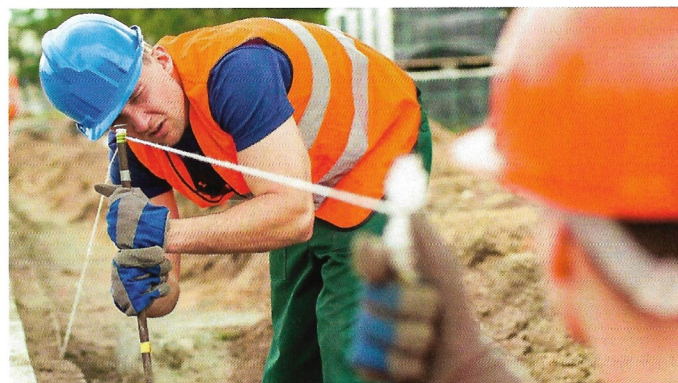


Over the lifetime of the wind farm, the fund could represent a meaningful and reliable source of income. We welcome your ideas on how it could best serve the community.



Opportunities for local businesses

Now, we're looking for suppliers to support Glensalloch Wind Farm across a range of services, including:



- **Construction:** fencing, groundworks, civil works, security
- **Business support:** catering, accommodation, transport, meeting rooms
- **Specialist services:** drone/photo/video, trades, cleaning, signage/printing.



At BayWa r.e. we are committed to supporting local communities with our projects – and that means working with local businesses wherever we can.

At our recent projects:

- **77% of civils contracts at Dalquhandy Wind Farm,**
- **80% at Broken Cross Wind Farm,** went to Scottish companies, many of them local. **We are also planning Meet-the-Buyer events to connect more suppliers with our project team.**

Run a local business?

Join our Local Business Register to hear about upcoming opportunities:

E: info@glensalloch.co.uk

T: 0141 291 5170

www.glensalloch.co.uk



Proven experience in Southern Scotland

BayWa r.e. has delivered multiple wind farms across the region, we work closely with communities, councils, and local businesses throughout development, construction and operation.



Dalquhandy Wind Farm – Coalburn, South Lanarkshire, operational and delivering a **community benefit of over £282,000** a year.



Broken Cross Wind Farm – near Rigside, South Lanarkshire, operational and delivering a **community benefit of over £295,000** annually including a Local Energy Discount scheme.



Visualisation from Southern Upland Way
Sanquhar

Cloud Hill Wind Farm – a proposed 10 turbine scheme between Sanquhar and Kirkconnel. Currently with the Scottish Government for determination .

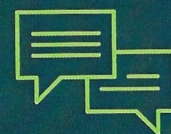
Stay involved



Glensalloch Wind Farm is in the early stages of development, and we are committed to keeping communities informed as the project develops.

We have already started speaking with local community councils and hosting workshops and informal drop-in sessions to hear your thoughts and ideas. Your feedback at this early stage is helping to shape our plans.

We invite you to be part of the ongoing consultation – come along, share your views, and help influence the future of the project.



E: info@glensalloch.co.uk
T: 0141 291 5170
www.glensalloch.co.uk



Scan the QR code to explore project details online.

